



Materials and Quantity (Large size)

- Self Fabric (Kaufman Premium Kona Cotton) 1/2 yd - Pre-washed before cutting
- Wonderunder 1/4yd
- Pellon 50 1/4yd
- Thermolam 1/8yd
- 1/8" Oval Elastic 29"
- 1/4" Rigilene Boning 32"
- 1 1/2" wide Velcro Loop 6 1/2"
- 5/8" wide Velcro Hook 6 1/2"
- 3" Malleable Metal Strip

Pattern Preparation

Print out the pattern PDF, follow the instructions written on the first page and tape them together to create the set of singer's mask patterns.

Preparation

1. Cut Wonderunder to the sizes so FACE SHIELD and NOSE PAD can fit.
2. Fuse FACE SHIELD Wonderunder onto Pellon and NOSE PAD Wonderunder onto Thermolam.
3. Cut all materials by using prepared patterns.
4. Copy lines and points from the patterns to the cut materials: Dart vanish points on BASE and COVER patterns, Velcro positions on COVER pattern, red and dash lines on FACE SHIELD pattern.

Terminology

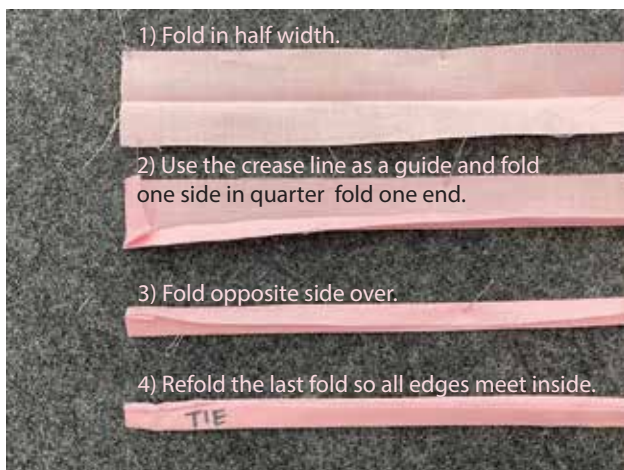
- RST= Right sides together
- RSO= Right side out
- SA= Seam allowance
- Right side= Face side of the fabric
- Wrong side= Opposite side from the face side of the fabric

Construction

TIES

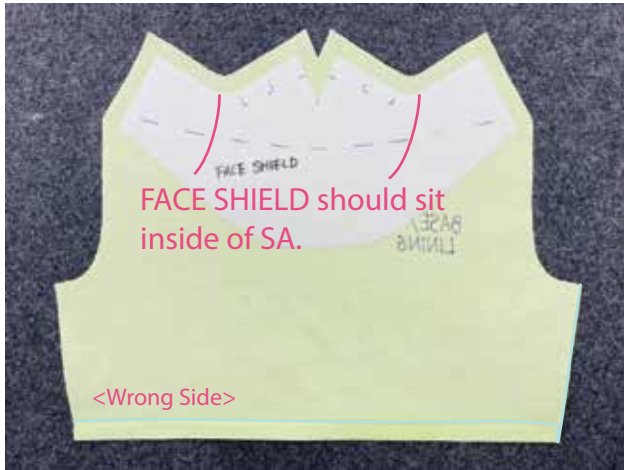
1. Fold the TIES into a quarter width, then fold under the one of the ends.

2. Edge stitch where two folds are meeting.



BASE and LINING

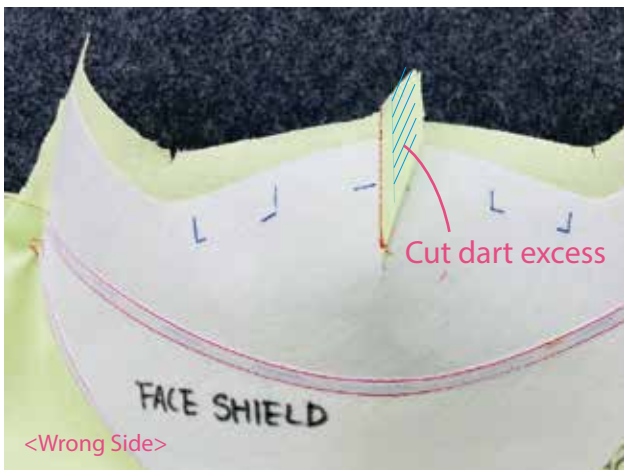
3. Press BASE hem at 1/2" from the end. Fuse FACE SHIELD on the wrong side of the BASE.



4. Apply Rigilene Boning by following the dashed lines on the FACE SHIELD.



5. Fold the BASE at the center RST. Sew and press the dart at the top. Cut dart excess at 1/4".



6. Sew the Nose Wire on the wrong side by following the red line on FACE SHIELD pattern.



7. Fuse NOSE PAD on right side of the BASE at right below the top seam line.



8. Preset the ties and elastics. See positions and angles in the image below.



9. Sew inseam and press the SA open. Turn BASE RSO



COVER

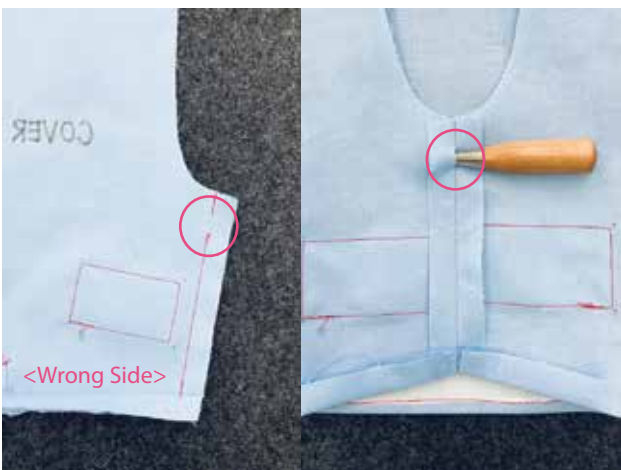
10. Attach Velcros at marked positions.



11. Sew and press dart. Press hem at 1/2" from the end. Trim dart excess at 1/4".



12. Sew and press inseam. Leave the dash line on the pattern unsewn.



13. Lay BASE and COVER RST. Pin the corners, notches together and sew.



14. Trim and clip the SA at curved seams.



15. Tack Chin Elastic at the side bottom corner SA.



16. Turn the mask to RSO and press the ends at the seams. Edge stitch around the upper and side of the mask.



17. Sew 1/2" casing for Chin Elastic. Pull the excess through the hole you made at step #12.



18. Pin the folded hems together and edge stitch to close the opening.



19. Attach the sliders to neck and ear elastics.

