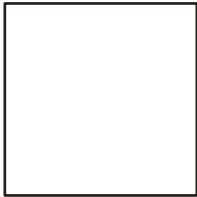


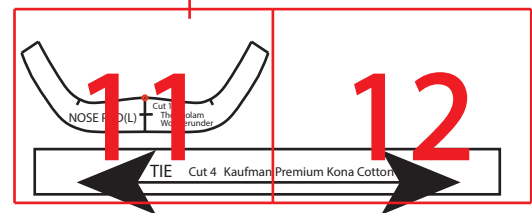
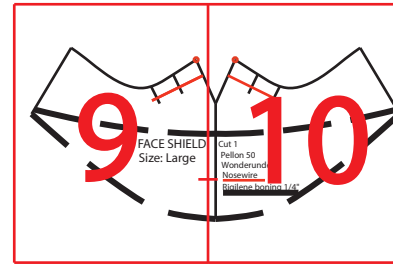
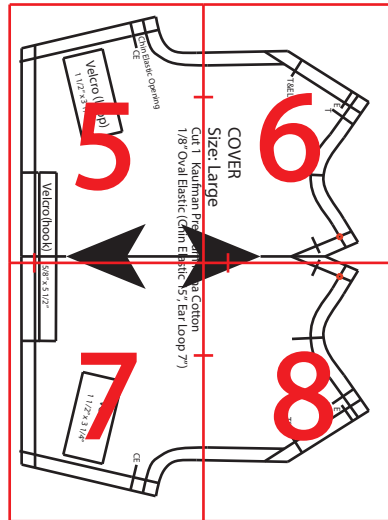
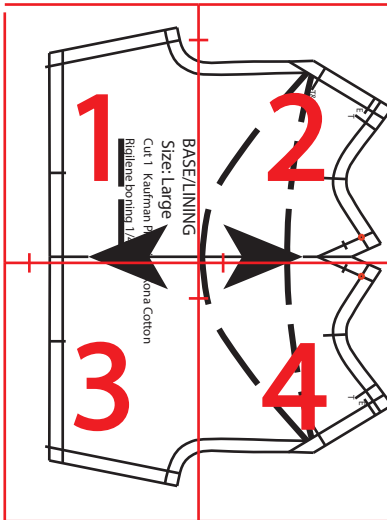
## Singer Mask - Large size

Print out the rest of pages and tape them together so that the red lines lay on top of each other to create the singer mask.

To ensure the accuracy of the patterns, make sure the square on each page is printed in 1" square. **Check printer settings and make sure the settings are at 100% prior to printing.**



All squares must measure 1" square to make an accurate patterns.

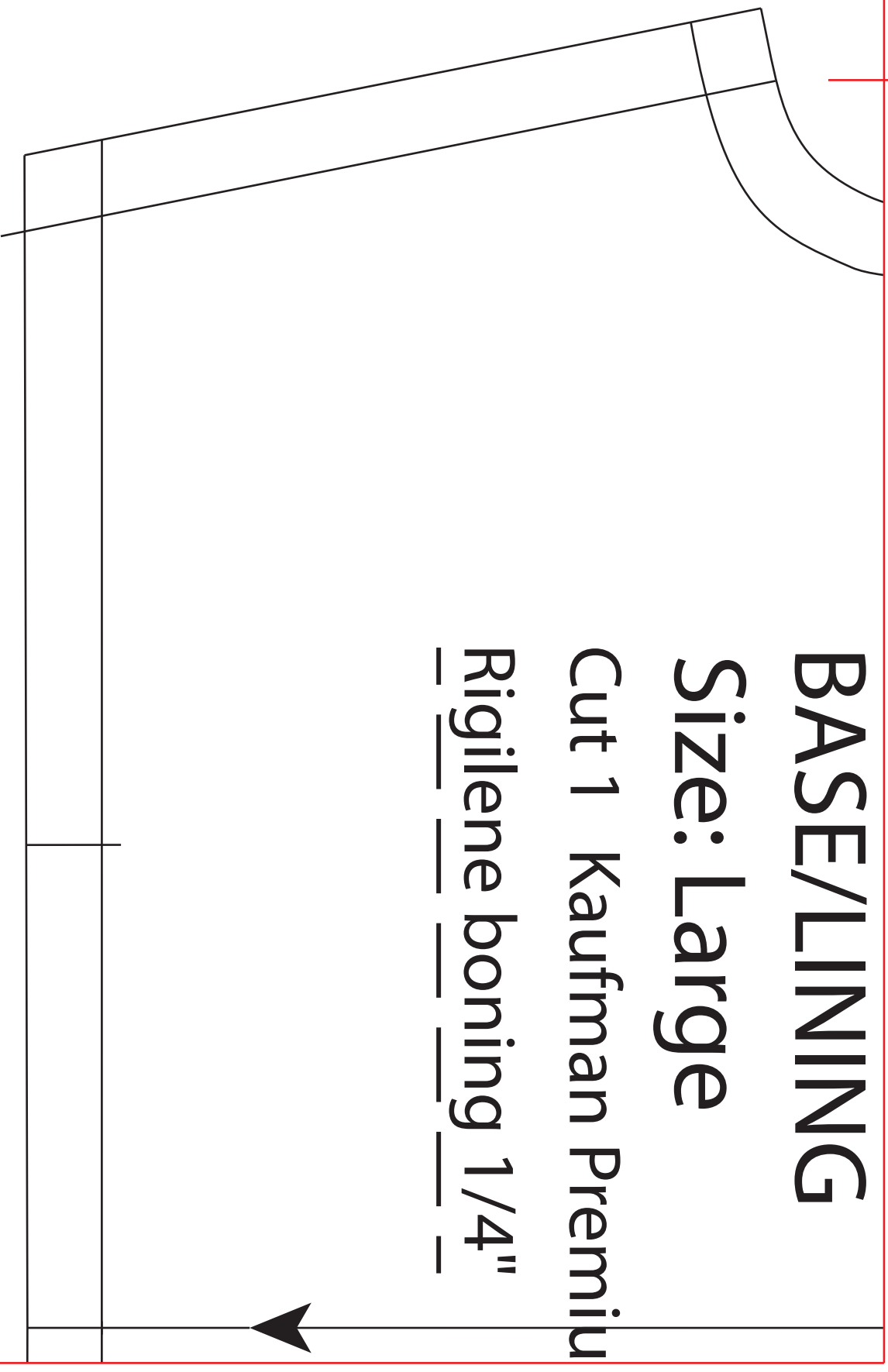


# BASE/LINING

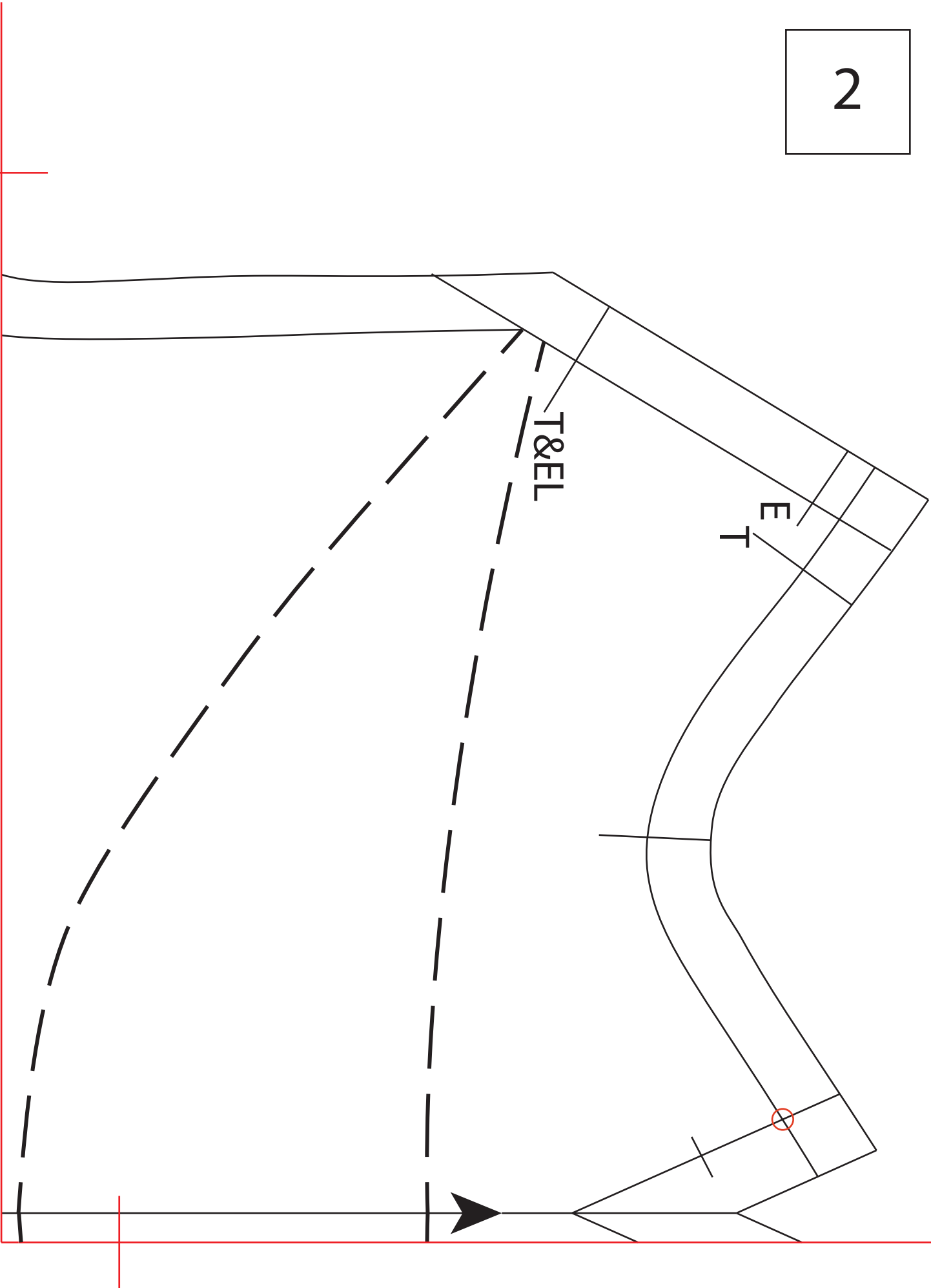
Size: Large

Cut 1 Kaufman Premium

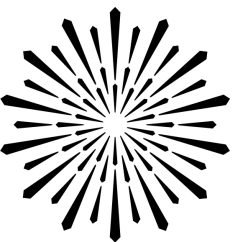
Rigilene boning 1/4"



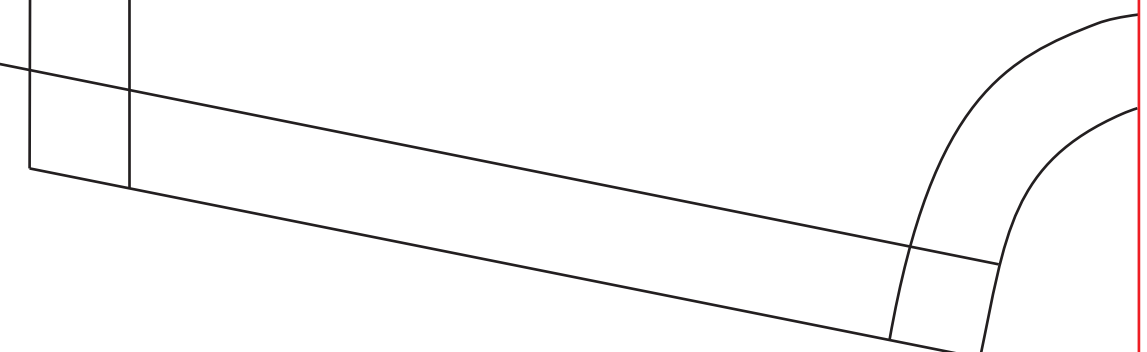
1

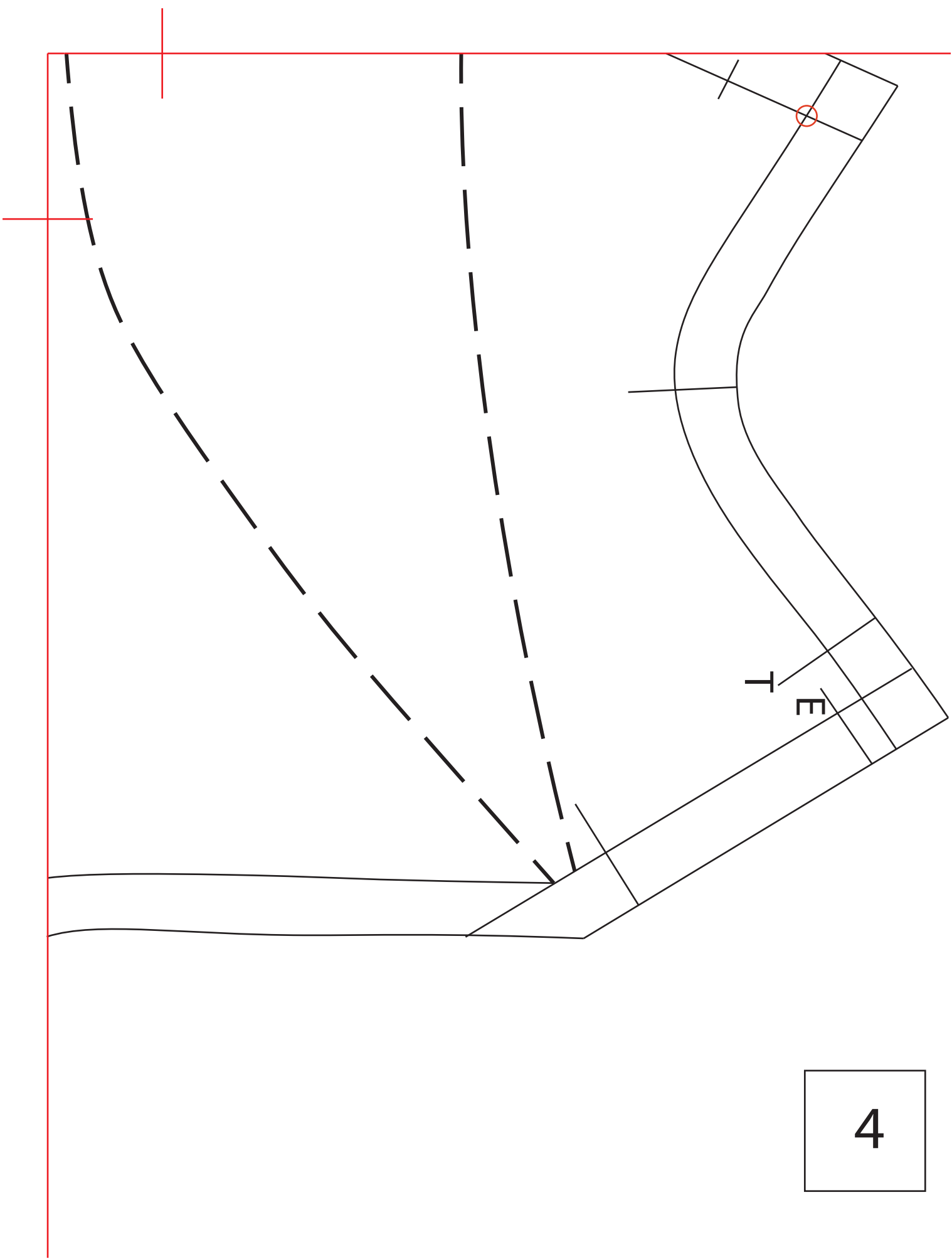


# m Kona Cotton



SAN FRANCISCO  
OPERA





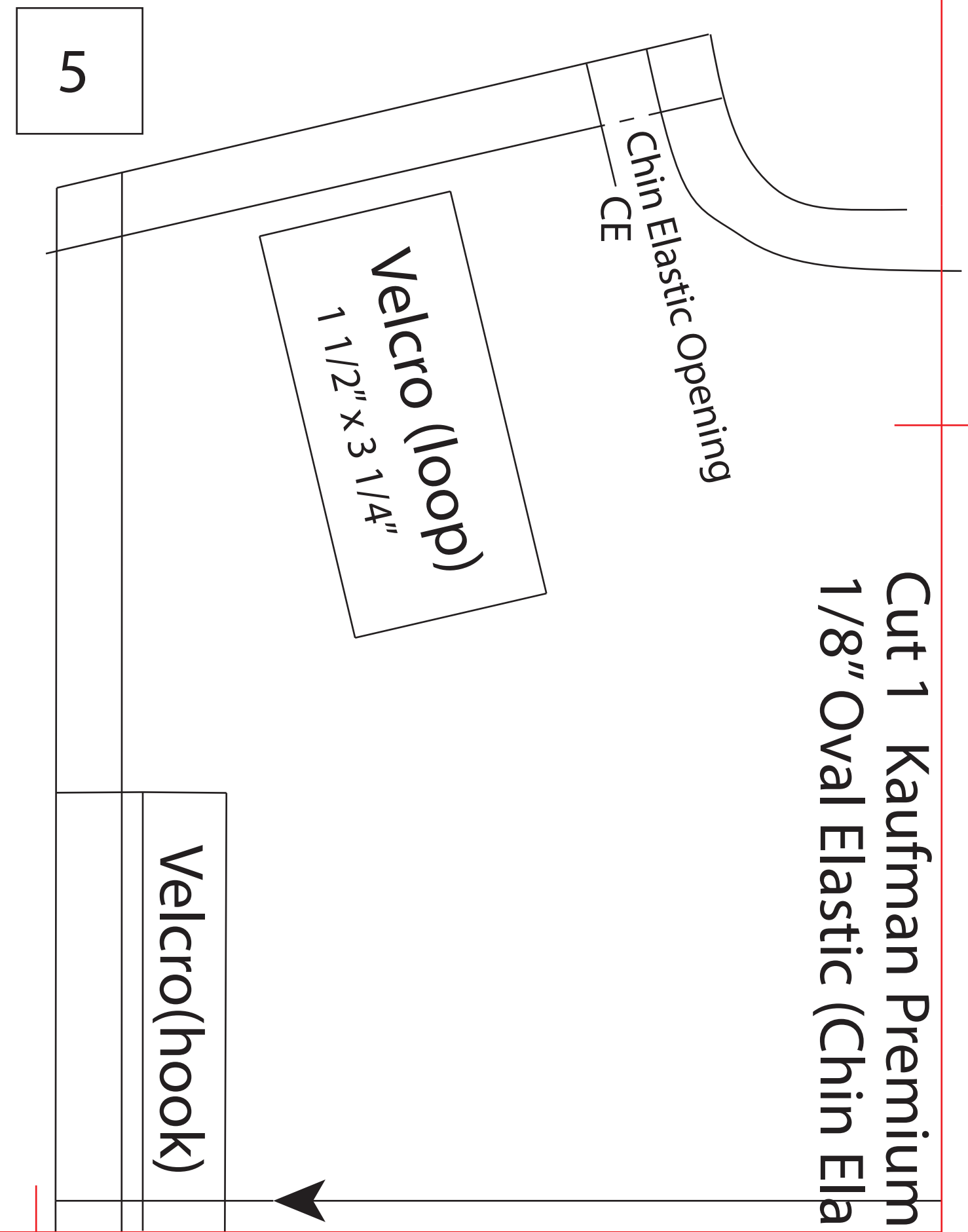
Cut 1 Kaufman Premium  
1/8" Oval Elastic (Chin Ela

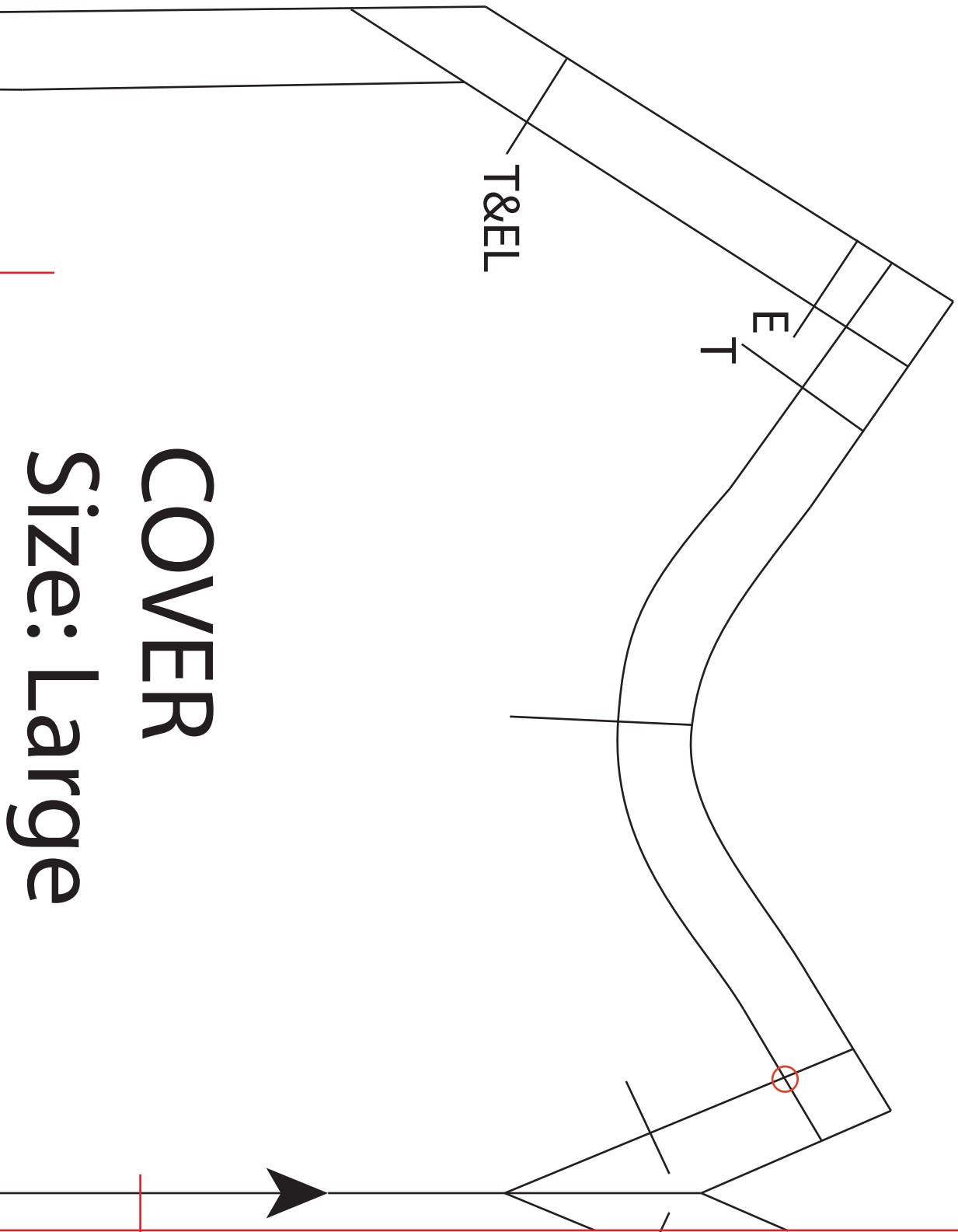
Chin Elastic Opening  
CE

Velcro (loop)  
1 1/2" x 3 1/4"

Velcro(hook)

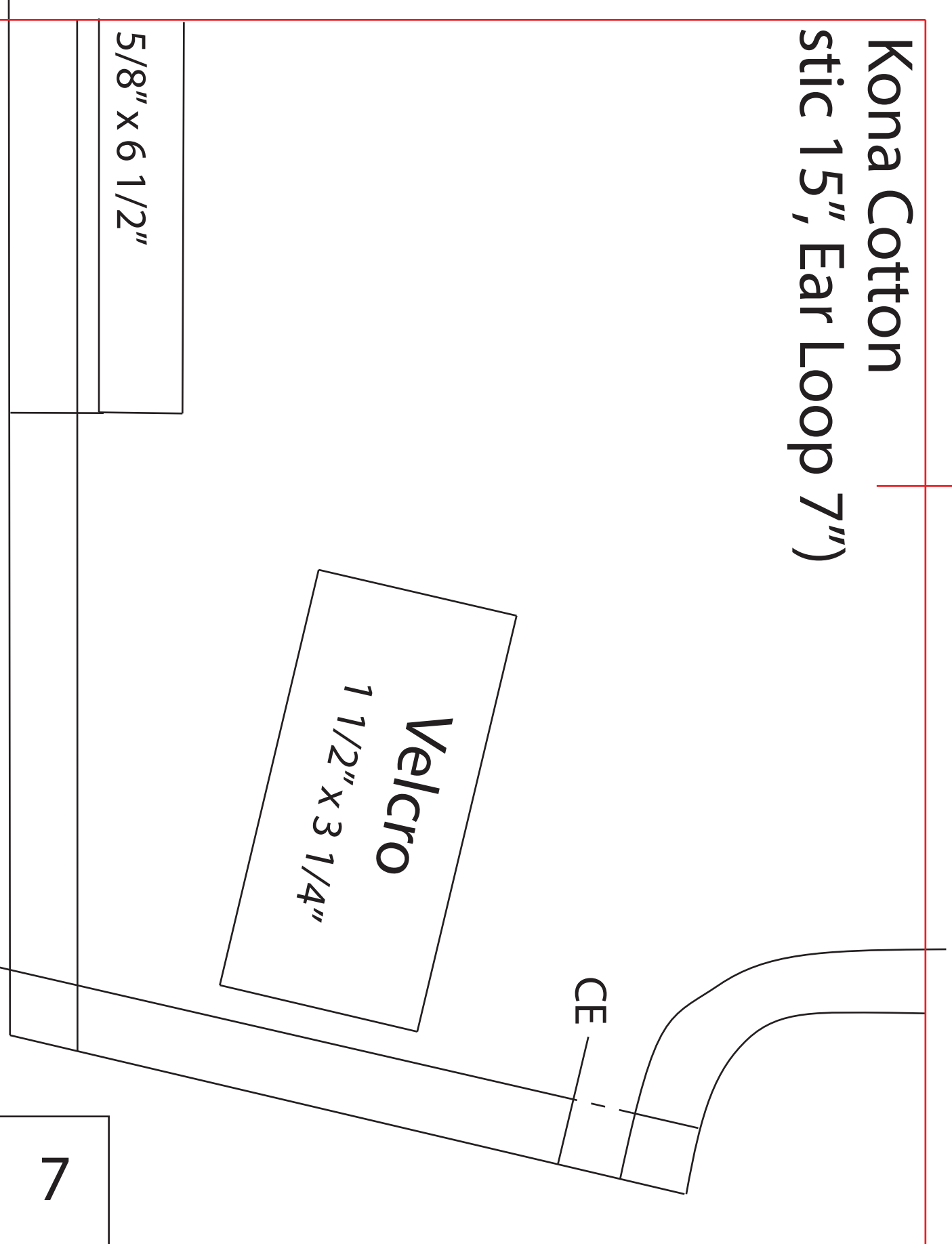
5



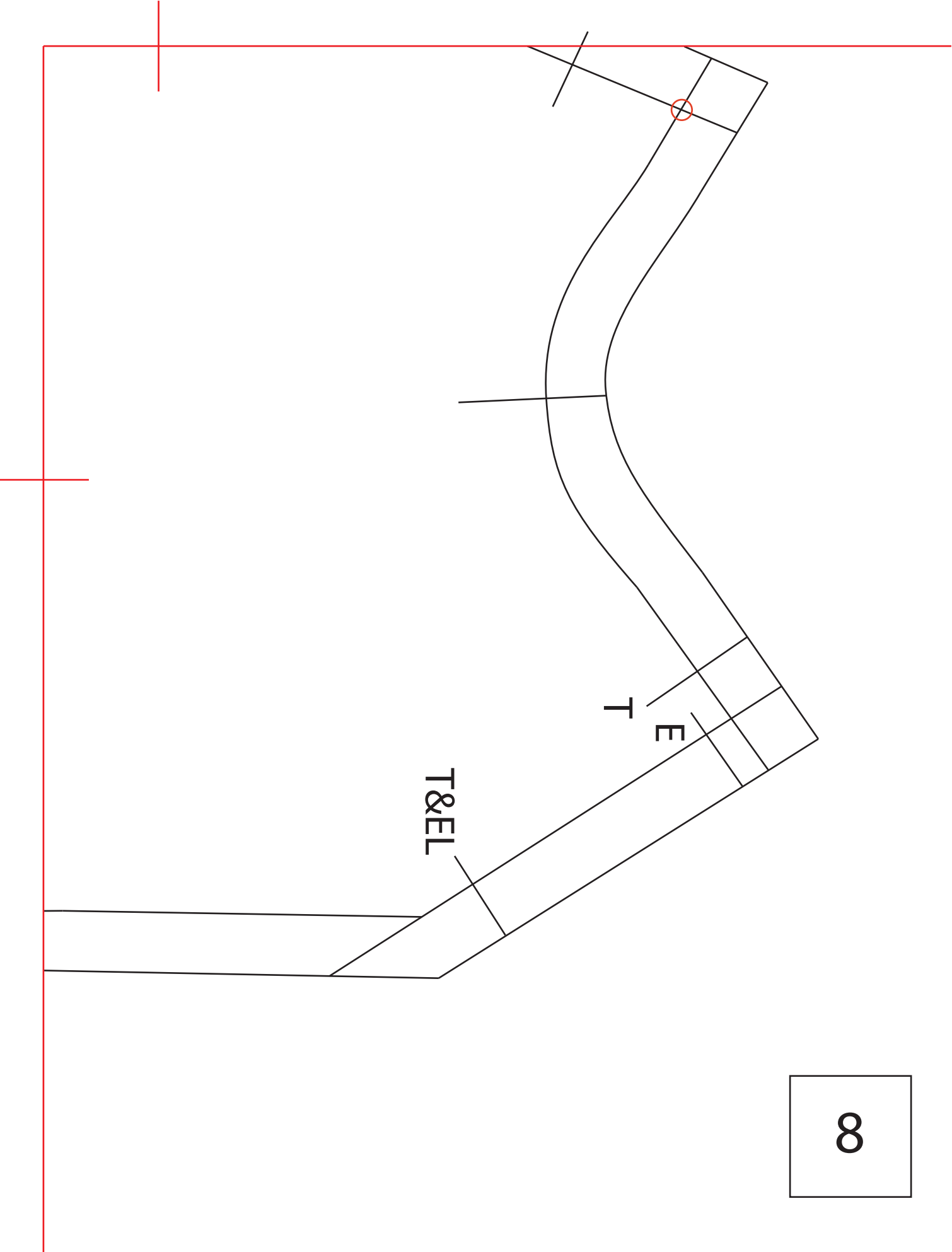


**COVER**  
**Size: Large**

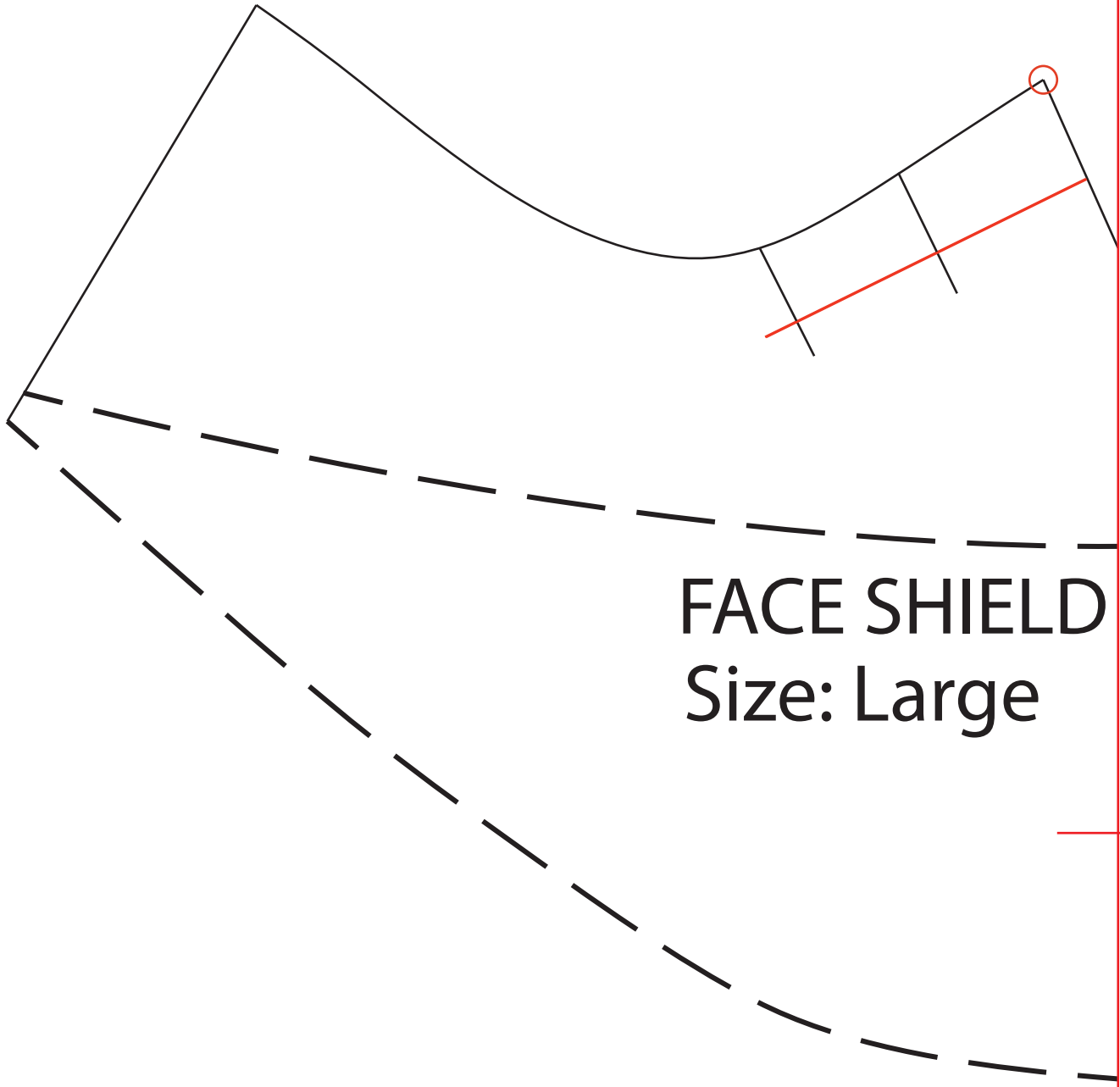
# Kona Cotton stic 15", Ear Loop 7")



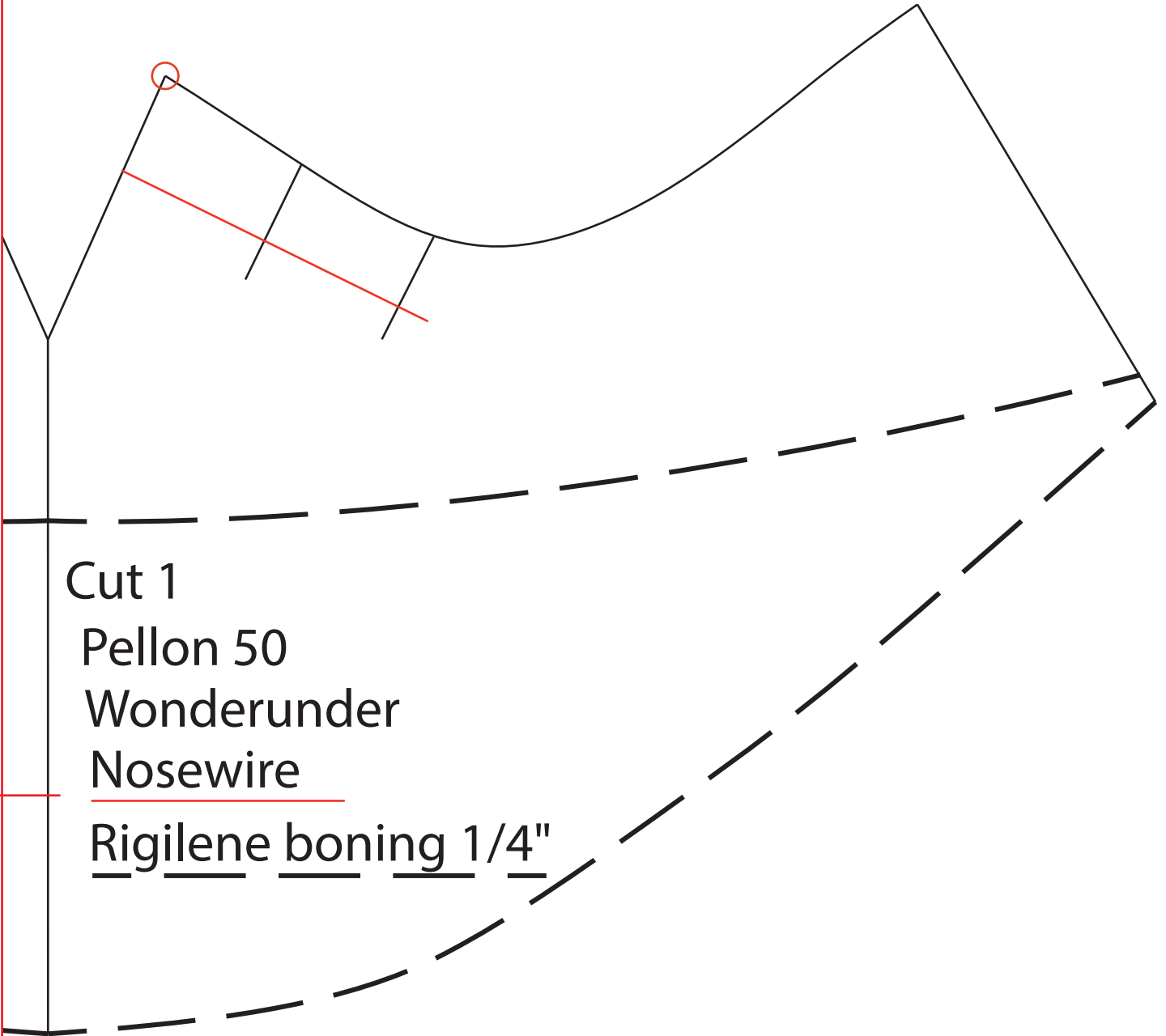
7



9



**FACE SHIELD**  
Size: Large



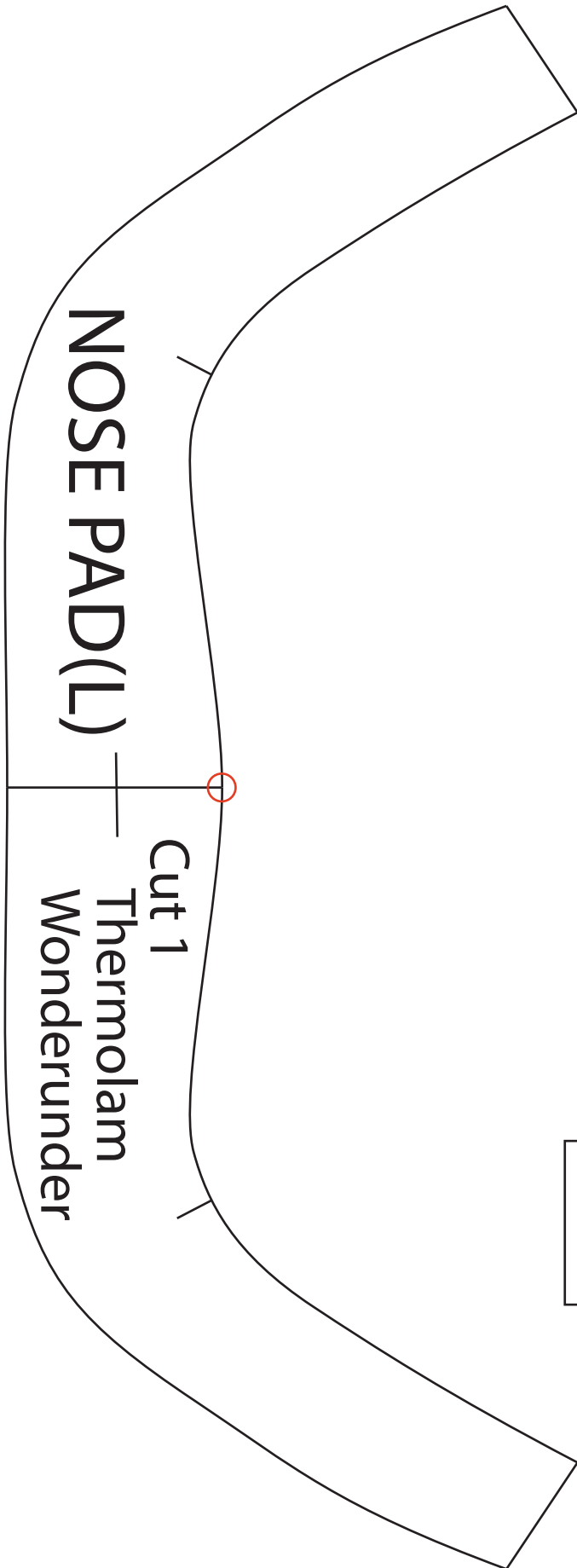
Cut 1

Pellon 50

Wonderunder

Nosewire

Rigilene boning 1/4"



# TIE Cut 4 Kaufman



---

Premium Kona Cotton

