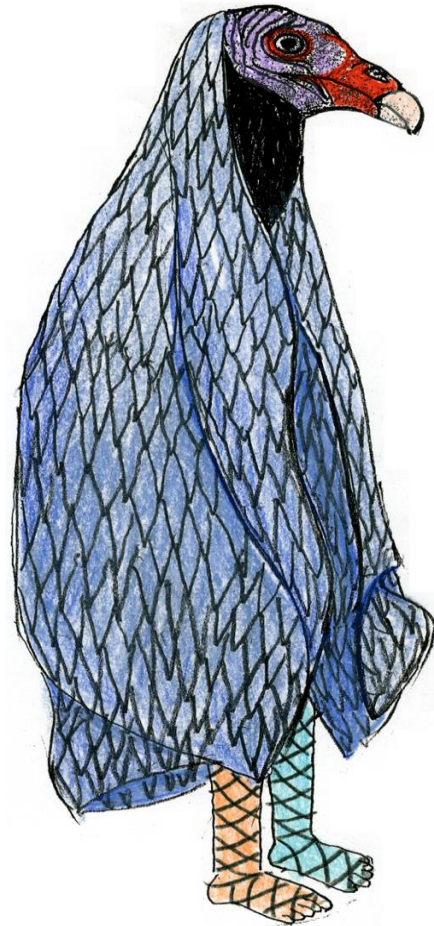


**SAN FRANCISCO OPERA**  
**THE MAGIC FLUTE**

**SFO / JUN KANEKO / HARRY SILVERSTEIN**  
**2012 COSTUME DESIGNS**



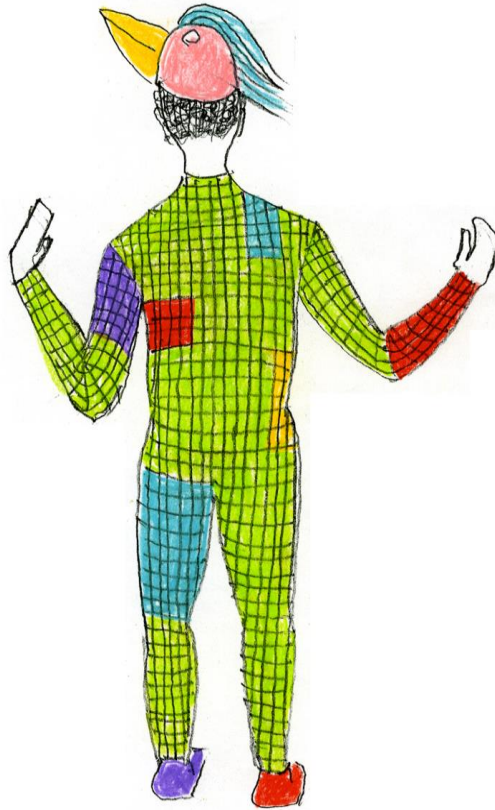
**SAN FRANCISCO**  
**OPERA EDUCATION**



Papagena

12/14/10





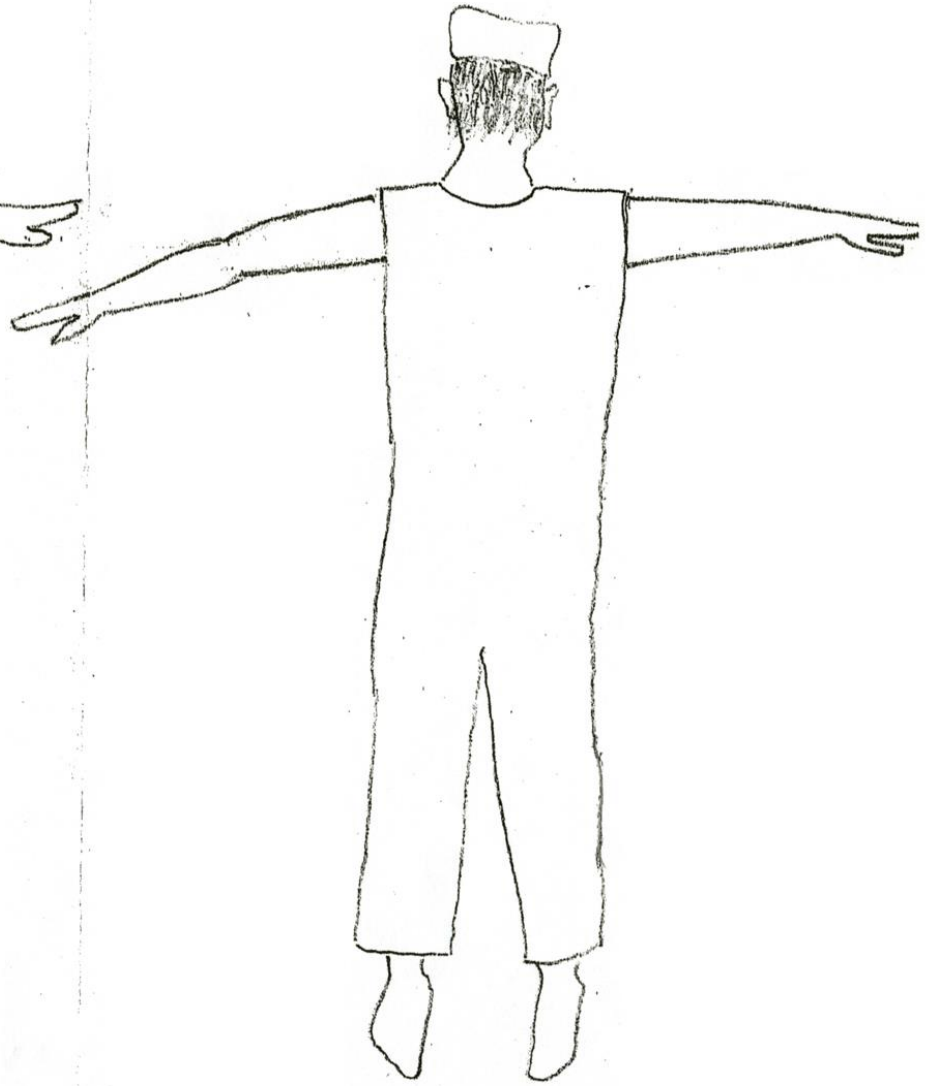
Papageno

Back

12/11/10



slave



2/17/2011



Speaker

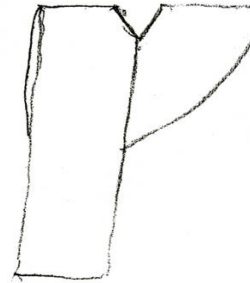
12/21/10

Tamino



12/12/18

Tamino



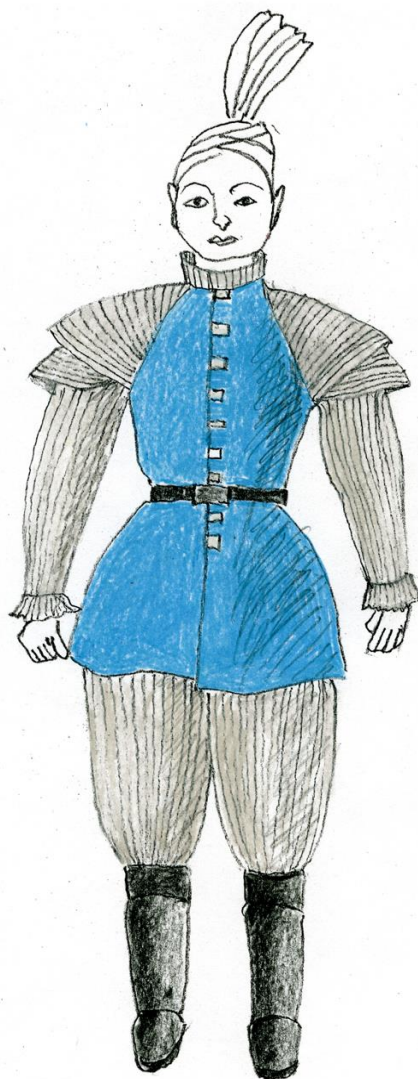
12/13/10  
12/12/16



2 man in Armor

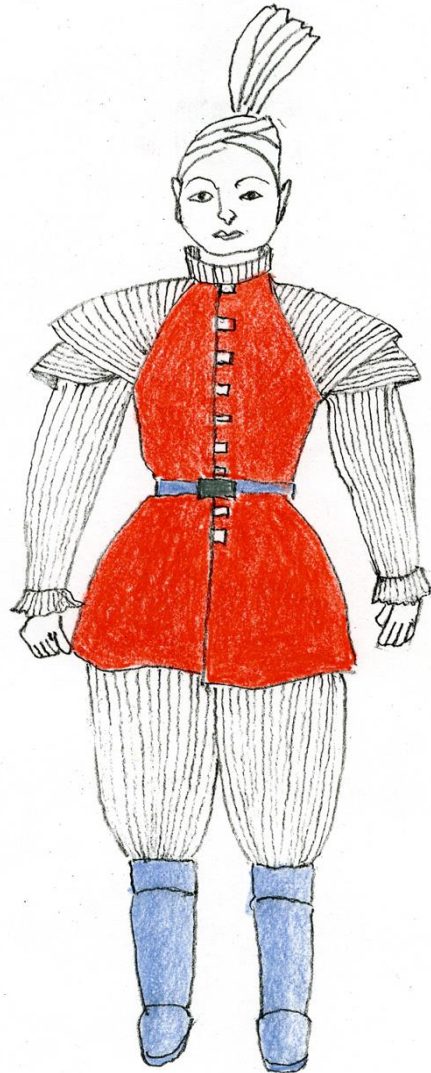
9/18/10

13/12/10



3 BOYS

12/24/10



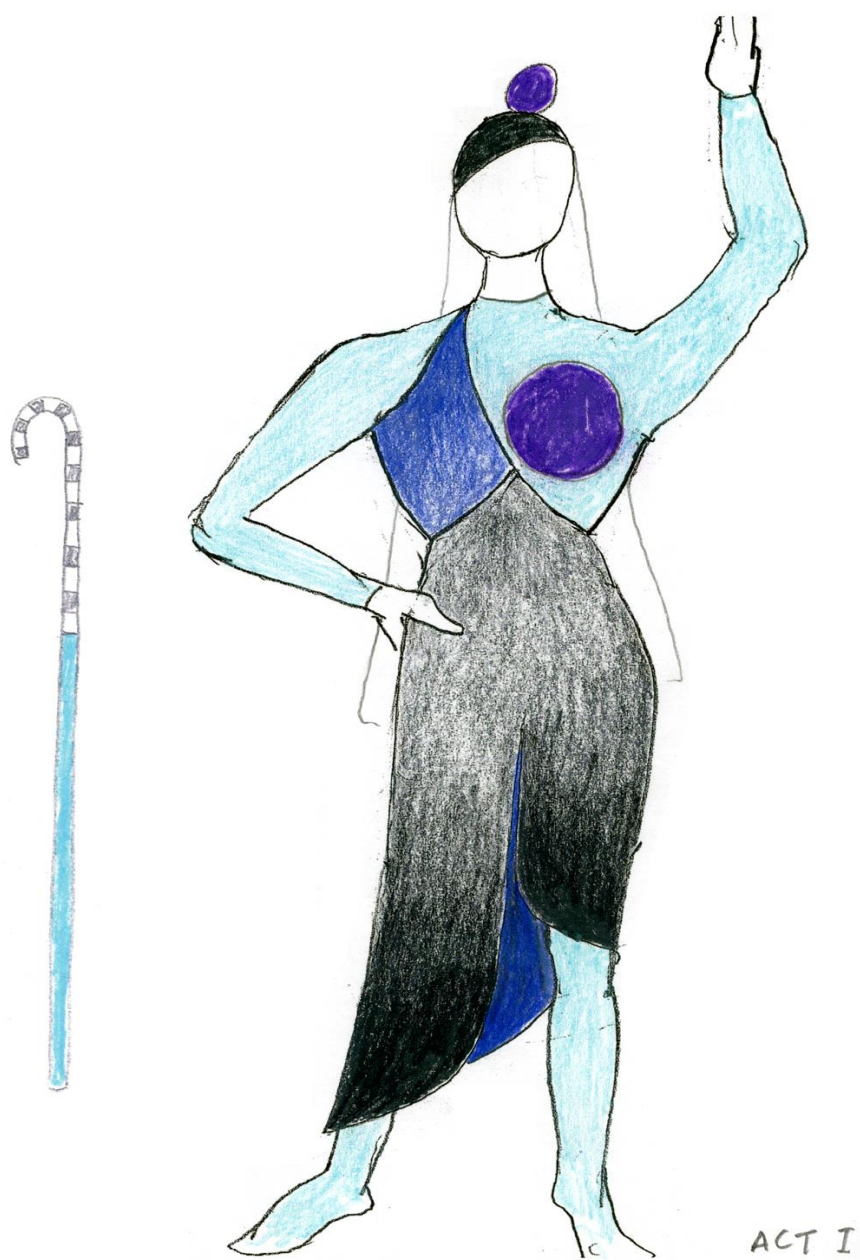
3 BOYES

12/24/10



3 BOYES

12/24/10



*The Magic Flute*— San Francisco Opera's 2012 production, Costume Design by Jun Kaneko, Directed by Harry Silverstein.



*The Magic Flute*— San Francisco Opera's 2012 production, Costume Design by Jun Kaneko, Directed by Harry Silverstein.



ACT I  
3 Ladies  
7/9/10

*The Magic Flute*— San Francisco Opera's 2012 production, Costume Design by Jun Kaneko, Directed by Harry Silverstein.



Pamina ACT I

2/10/2011

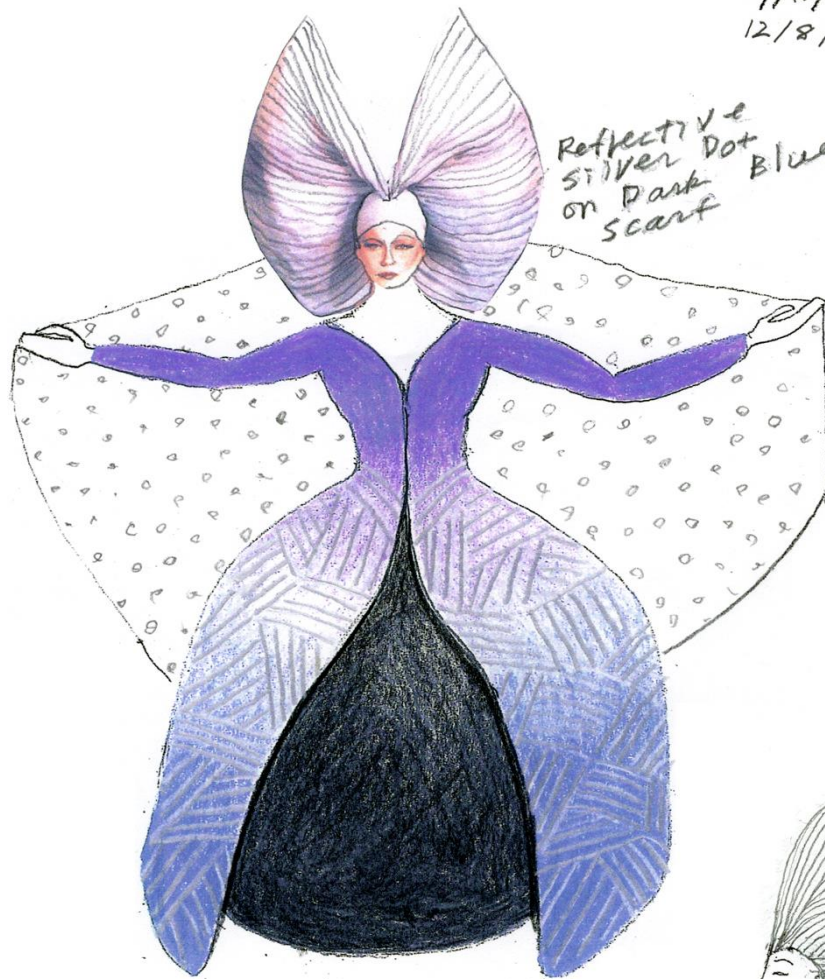
7/11/10



Act I Queen of Night

7/11/10  
12/8/10

Reflective  
Silver Dot  
on Dark Blue  
Scarf



ACT II Queen of Night



Monostatos

12/18/16