

## ART IN THE TIME OF *MANON*

Movements in visual art and music tend to reflect each other in any given time period, due to the fact that the cultural elite tended to share social circles. This period in visual art was transitional, as artists moved away from Realism (the attempt to represent subject matter truthfully, without artificiality) toward Impressionism (a movement characterized by relatively small, thin, yet visible brush strokes, open composition and emphasis on accurate depiction of light in its changing qualities). Here are some paintings produced around the time that *Manon* premiered in 1884. These will help you get a sense of not only why the music sounds the way it does, but what costumes, set pieces and other visual aspects of the opera may have looked like back then!



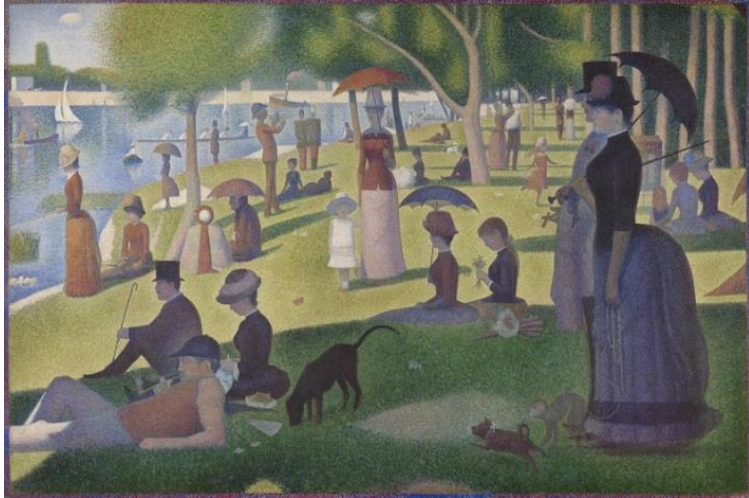
***Impression, Sunrise***  
**Claude Monet (1840–1926)**  
**1872**  
**Oil on canvas**

*This painting was shown at the “Exhibition of the Impressionists” in April 1874, and is the painting attributed to giving rise to the name of the Impressionist movement. It depicts the port of Le Havre, Monet’s hometown, and is his most famous painting of that harbor.*



***Dance at le Moulin de la Galette***  
**Pierre-Auguste Renoir (1841–1919)**  
**1876**  
**Oil on canvas**

*Hailed as one of Renoir’s most important works of the mid-1870s, this painting depicts the Moulin de la Galette, which was an open-air dancehall and café frequented by many artists living in Paris.*



**A Sunday on La Grande Jatte**  
**Georges Seurat (1859–1891)**  
**1884**  
**Oil on canvas**

*This painting is one of the most famous painted by French artist George Seurat. It is an example of the pointillist technique, which means that the painting is made up completely of tiny, distinct dots of color. The setting of the composition is the banks of the River Seine in Paris.*

*For further exploration of this period in art, check out these websites:*

- <http://www.artble.com/>
- <http://www.theartstory.org/movement-impressionism.htm>
- [http://www.metmuseum.org/toah/hd/imml/hd\\_imml.htm](http://www.metmuseum.org/toah/hd/imml/hd_imml.htm)
- <https://www.nationalgallery.org.uk/paintings/learn-about-art/guide-to-impressionism/guide-to-impressionism>
- <https://www.khanacademy.org/humanities/becoming-modern/avant-garde-france/impressionism/a/a-beginners-guide-to-impressionism>
- [http://jmhosting.space/mea\\_timeline/](http://jmhosting.space/mea_timeline/)