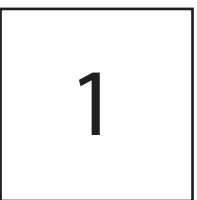


BASE/LINING

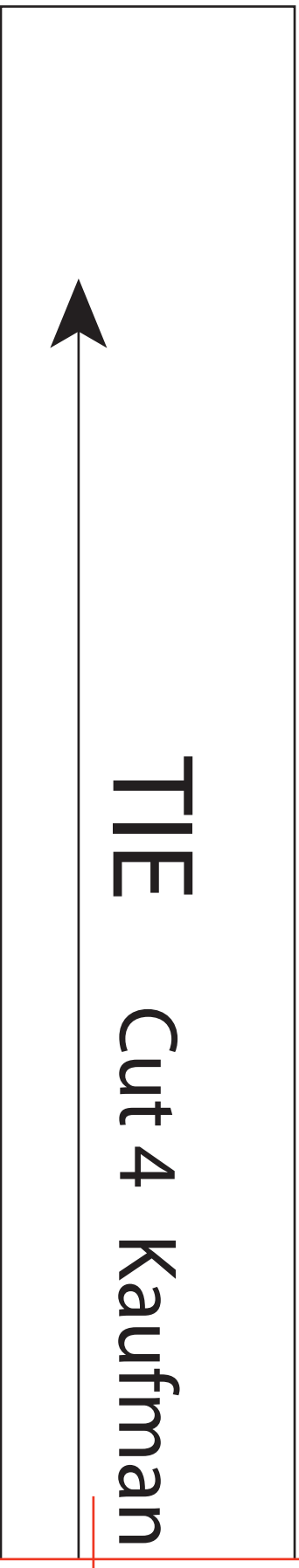
Size: **Medium**

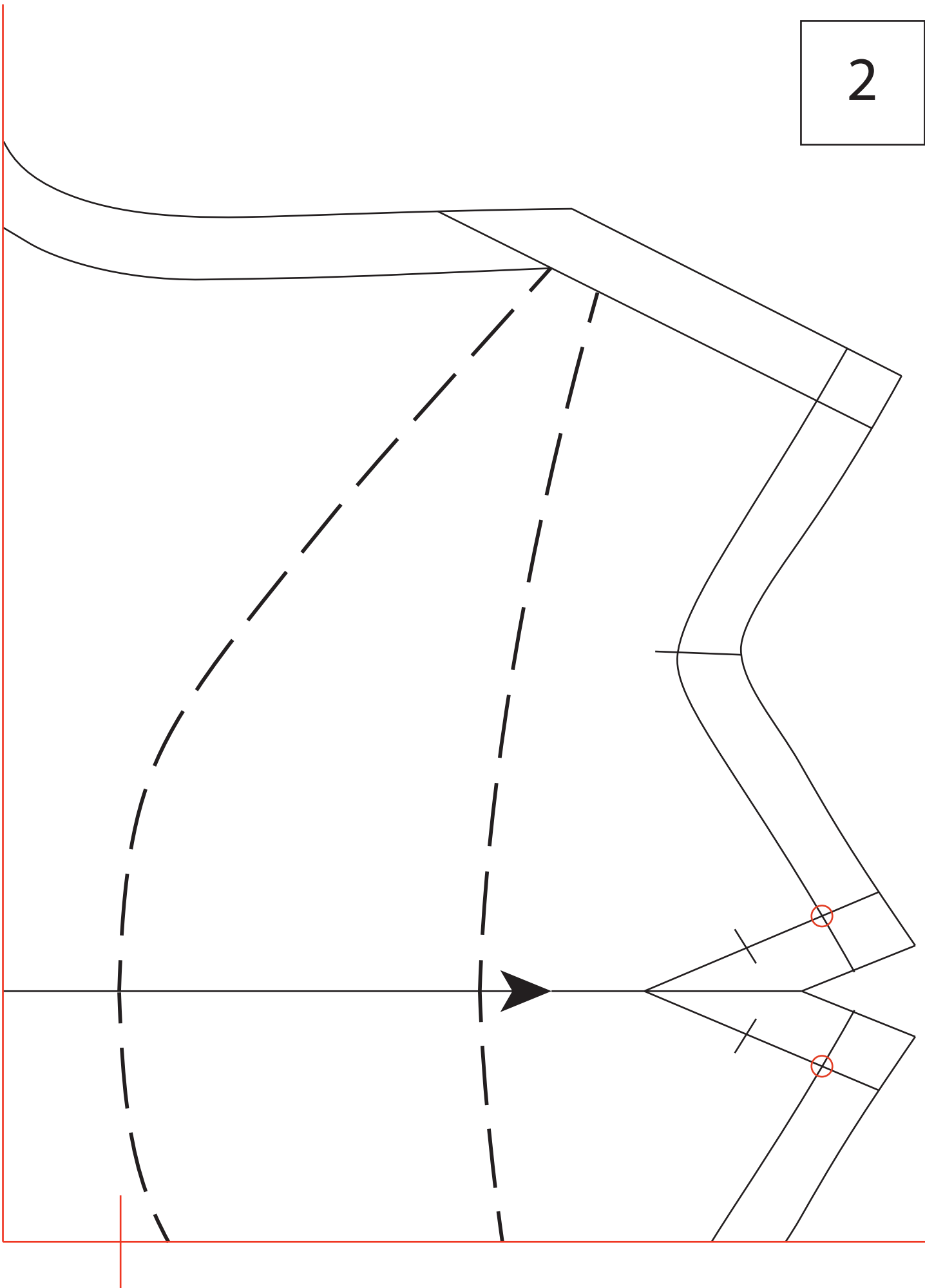
Cut 1 Kaufman Premium Kona

Rigilene boning $\frac{1}{4}$ "

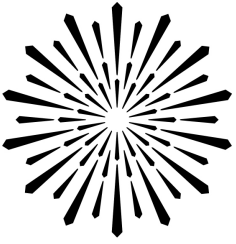


TIE Cut 4 Kaufman

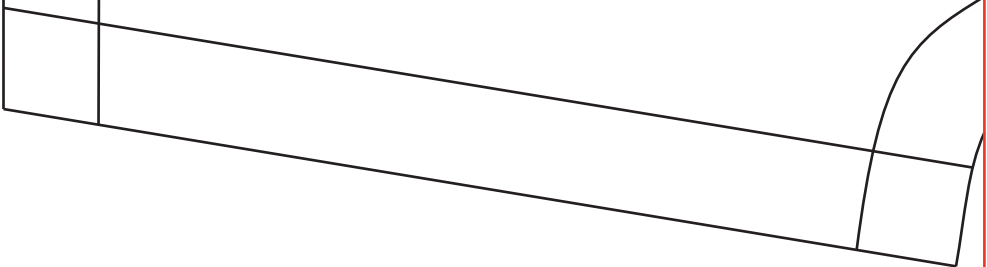




Cotton

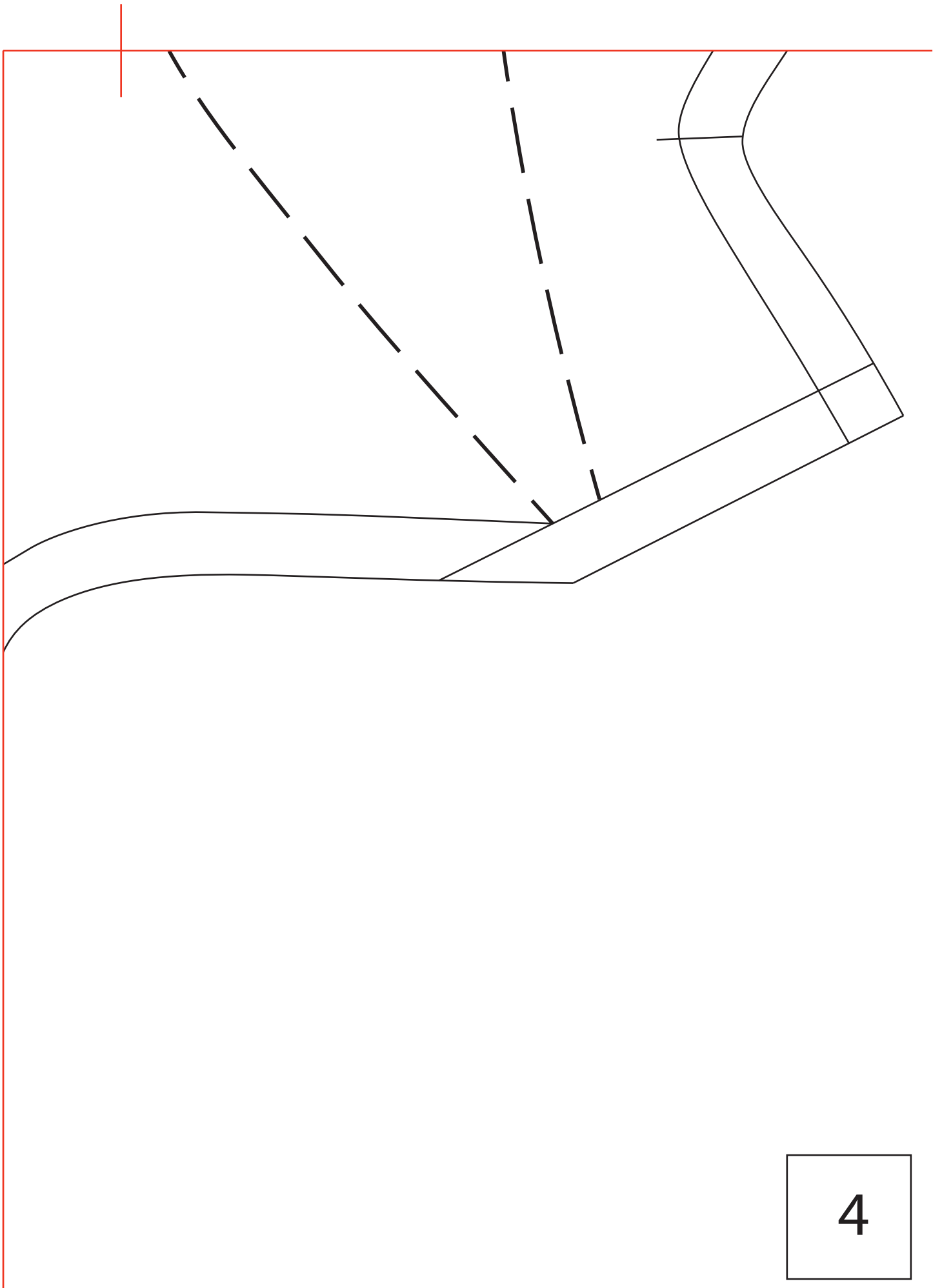


SAN FRANCISCO
OPERA



Premium Kona Cotton





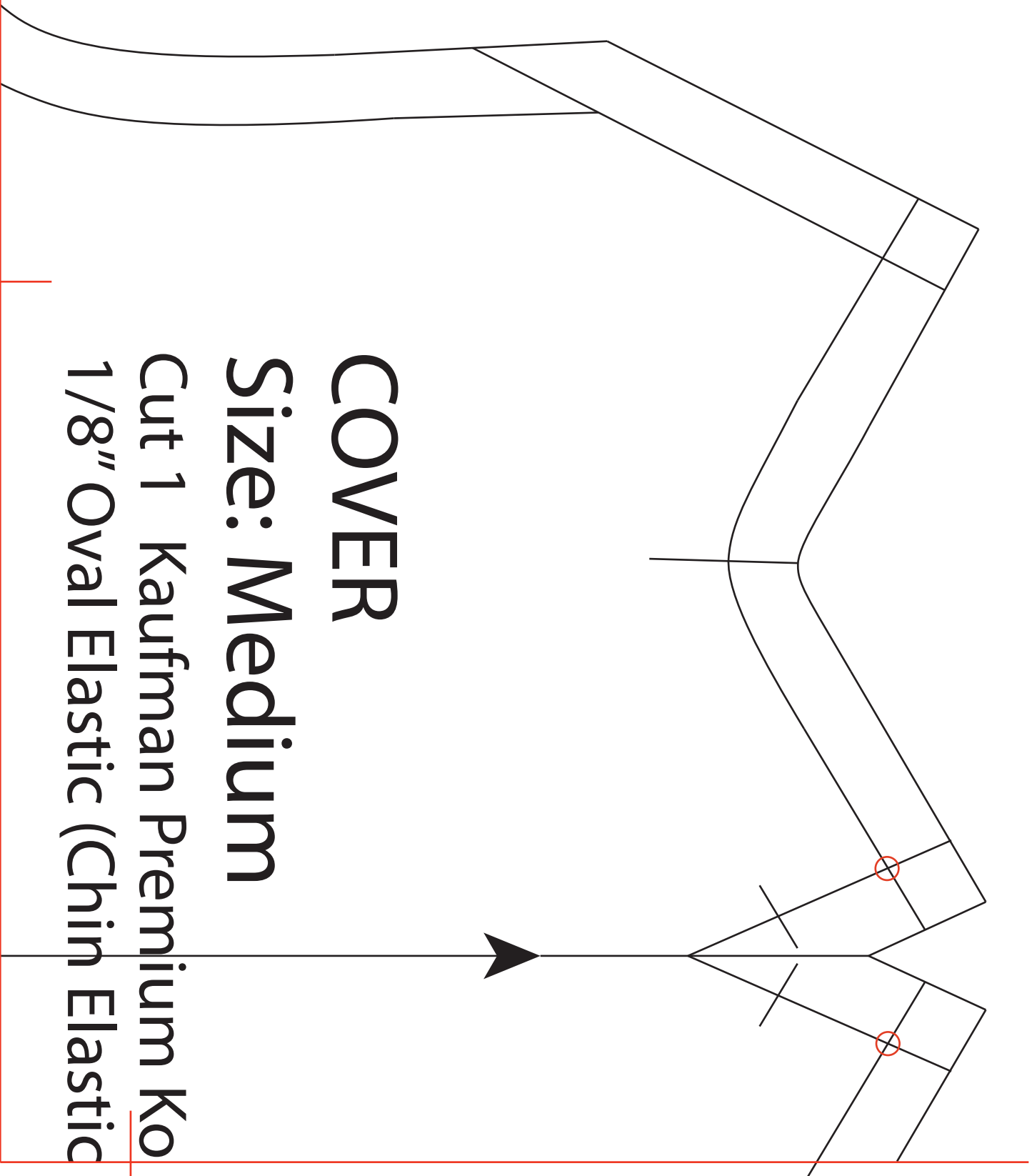
Chin Elastic Opening
CE

Velcro(loop)
1 1/2" x 2 1/2"

Velcro(hook) 5/8" x 4

5

6



COVER

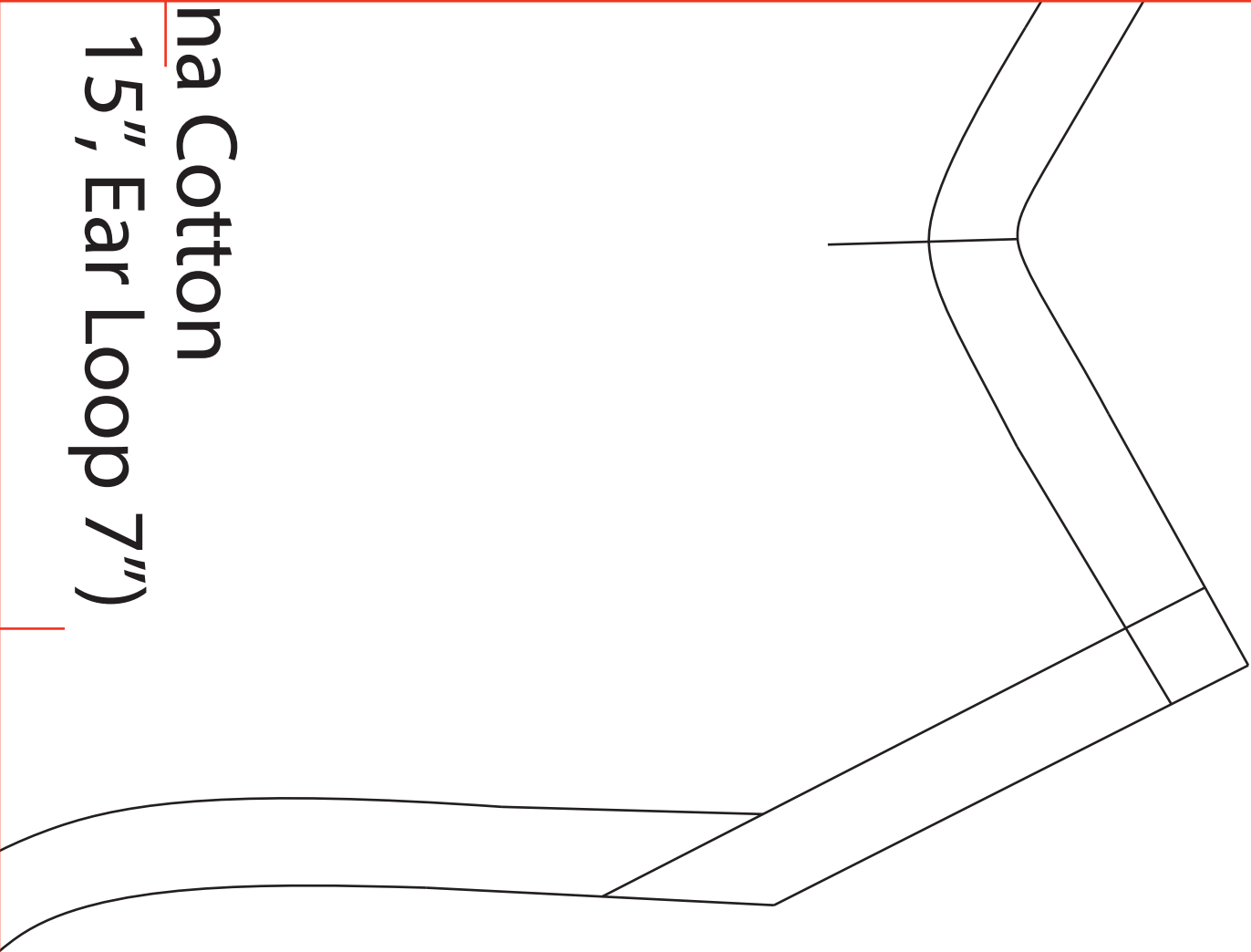
Size: **Medium**

Cut 1 Kaufman Premium Ko
1/8" Oval Elastic (Chin Elastic)

Velcro(loop)
1 1/2" x 2 1/2"

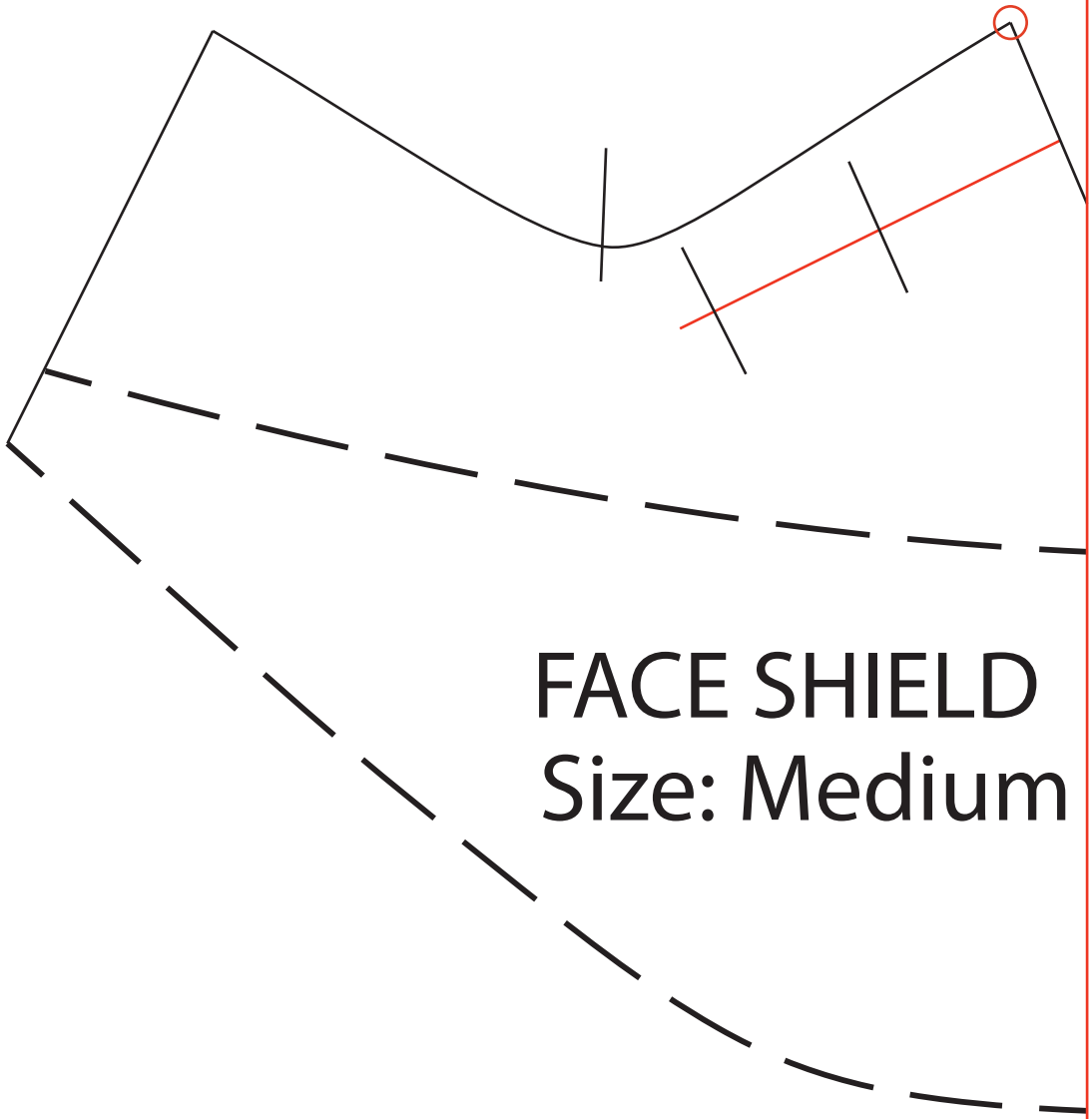
3/4"

CE

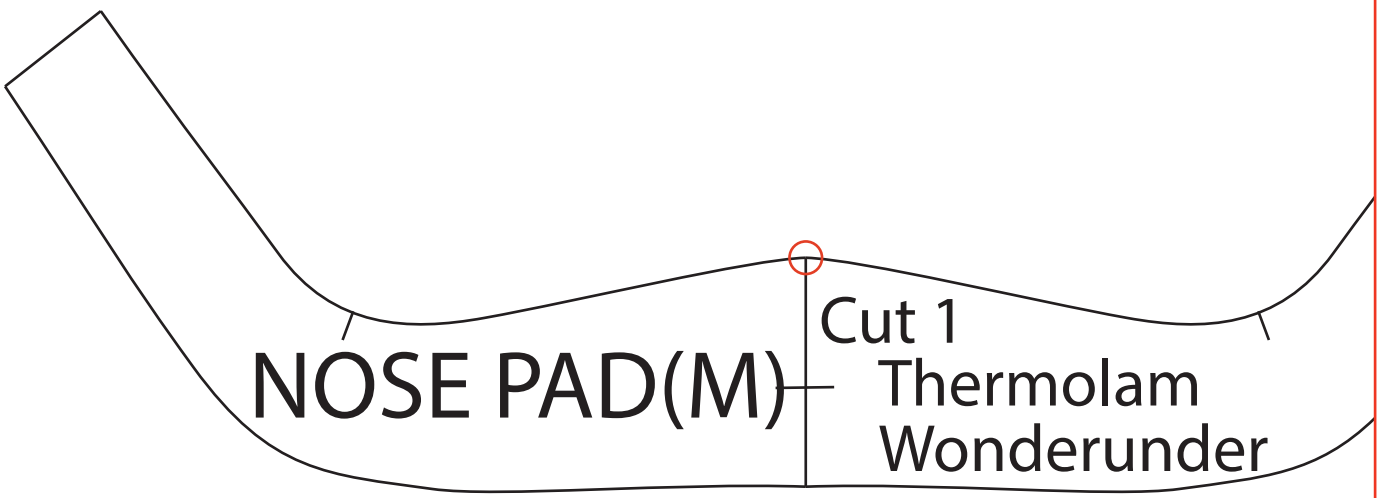


na Cotton
15", Ear Loop 7")

9

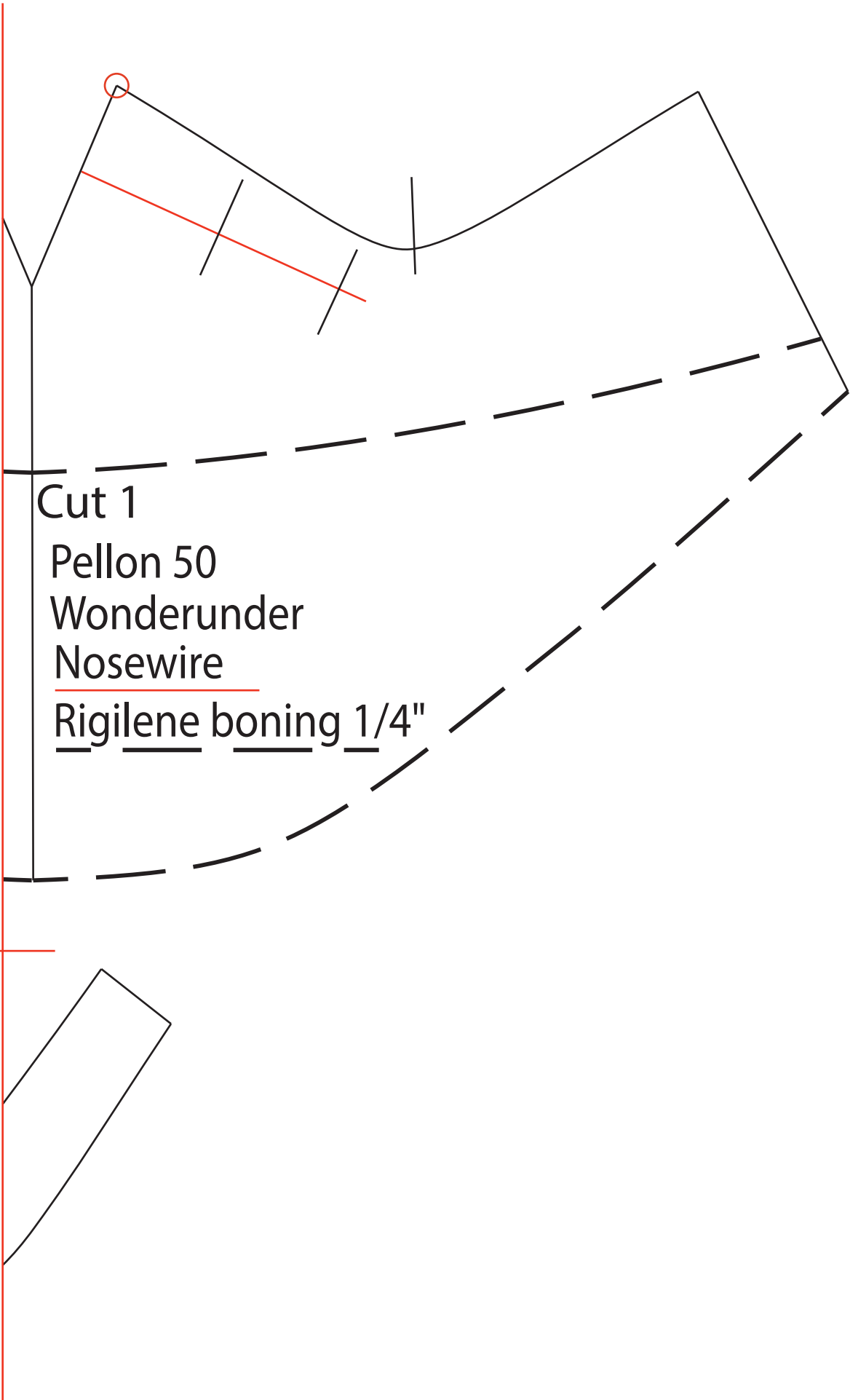


FACE SHIELD
Size: Medium



NOSE PAD(M)

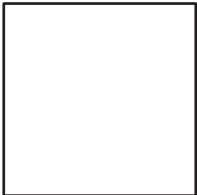
Cut 1
Thermolam
Wonderunder



Singer Mask - Medium size

Print out the rest of pages and tape them together so that the red lines lay on top of each other to create the singer mask.

To ensure the accuracy of the patterns, make sure the square on each page is printed in 1" square. **Check printer settings and make sure the settings are at 100% prior to printing.**



All squares must measure 1" square to make an accurate patterns.

