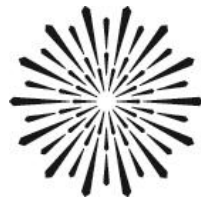


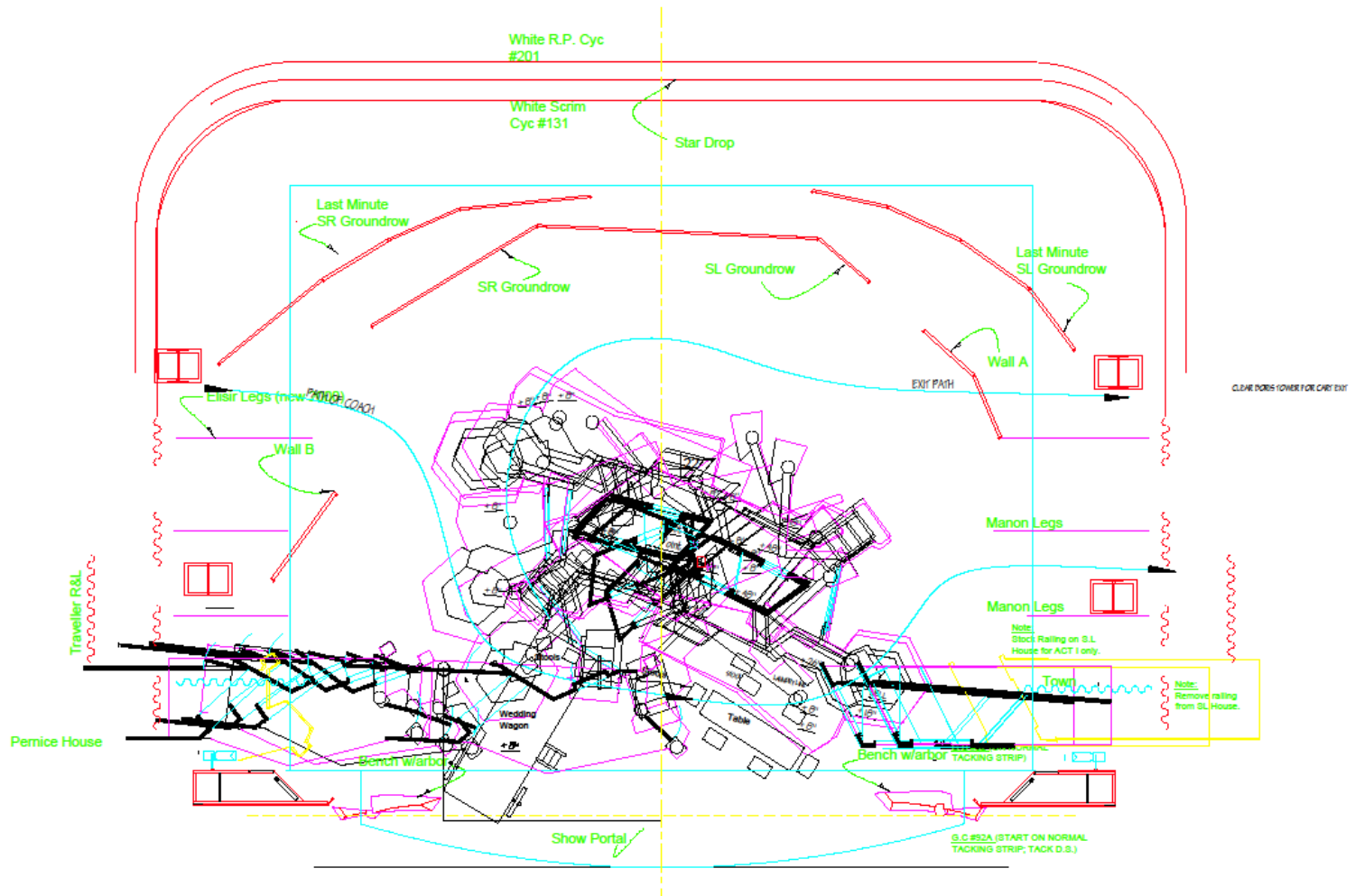
**SAN FRANCISCO OPERA**  
**L'ELISIR D'AMORE**  
**(ELIXIR OF LOVE)**

**SFO / LOTFI MANSOURI / ROBERT DARLING / JOHN COYNE**  
**2000-2001 PRODUCTION SET PLANS & PHOTOS**

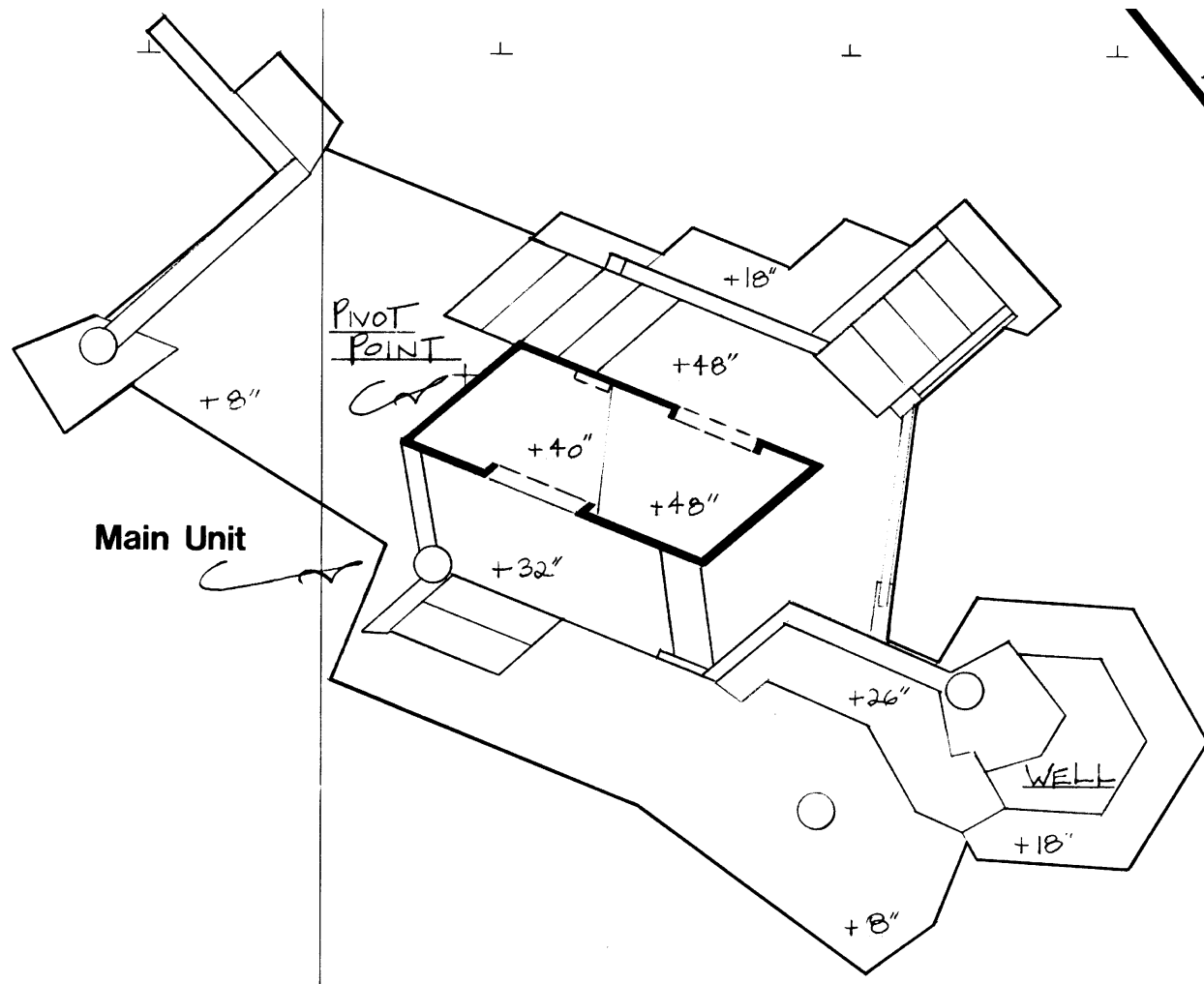


**SAN FRANCISCO**  
**OPERA EDUCATION**





L'ELISIR D'AMORE (ELIXIR OF LOVE)— San Francisco Opera's 2000-2001 production, set design by Robert Darling, revised set design by John Coyne.



L'ELISIR D'AMORE (ELIXIR OF LOVE)— San Francisco Opera's 2000-2001 production, set design by Robert Darling, revised set design by John Coyne.



L'ELISIR D'AMORE (ELIXIR OF LOVE)— San Francisco Opera's 2000-2001 production, set design by Robert Darling, revised set design by John Coyne.

- Suppose he dies and leaves you nothing?  
- What would it matter?



L'ELISIR D'AMORE (ELIXIR OF LOVE)— San Francisco Opera's 2000-2001 production, set design by Robert Darling, revised set design by John Coyne.



L'ELISIR D'AMORE (ELIXIR OF LOVE)— San Francisco Opera's 2000-2001 production, set design by Robert Darling, revised set design by John Coyne.

What is this commotion?



L'ELISIR D'AMORE (ELIXIR OF LOVE)— San Francisco Opera's 2000-2001 production, set design by Robert Darling, revised set design by John Coyne.



L'ELISIR D'AMORE (ELIXIR OF LOVE)— San Francisco Opera's 2000-2001 production, set design by Robert Darling, revised set design by John Coyne.



L'ELISIR D'AMORE (ELIXIR OF LOVE)— San Francisco Opera's 2000-2001 production, set design by Robert Darling, revised set design by John Coyne.



L'ELISIR D'AMORE (ELIXIR OF LOVE)— San Francisco Opera's 2000-2001 production, set design by Robert Darling, revised set design by John Coyne.

I heard it from a peddler . . .



L'ELISIR D'AMORE (ELIXIR OF LOVE)— San Francisco Opera's 2000-2001 production, set design by Robert Darling, revised set design by John Coyne.



L'ELISIR D'AMORE (ELIXIR OF LOVE)— San Francisco Opera's 2000-2001 production, set design by Robert Darling, revised set design by John Coyne.



L'ELISIR D'AMORE (ELIXIR OF LOVE)— San Francisco Opera's 2000-2001 production, set design by Robert Darling, revised set design by John Coyne.



L'ELISIR D'AMORE (ELIXIR OF LOVE)— San Francisco Opera's 2000-2001 production, set design by Robert Darling, revised set design by John Coyne.